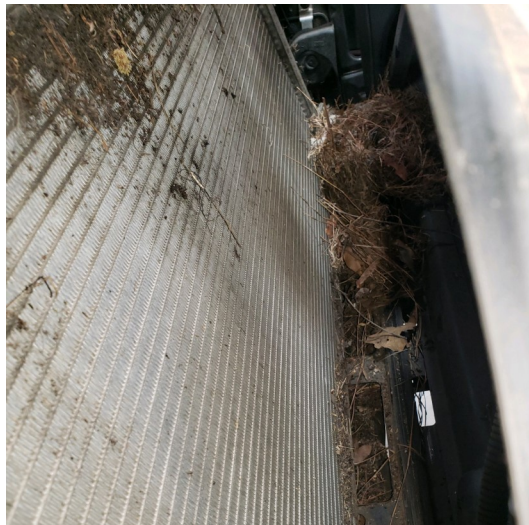


Extend the Life of Your Condenser



As described in gpd Tech Tip #1, late model/ parallel flow condensers cannot be flushed. They must be replaced. These newer condensers are designed with many small passages for more efficient cooling compared to past designs. Although more efficient, parallel flow condensers are more susceptible to debris and getting clogged, which can lead to premature failure. Vehicles that have not been started in a long time or stored outside are more likely to experience premature failure due to excess debris restricting air flow to cool the system and passengers.

Before diagnosing an A/C system/ condenser, be sure to clear any surrounding debris, dust, trash, etc.



A cause of premature condenser failure is excess debris in and/or surrounding the condenser.

